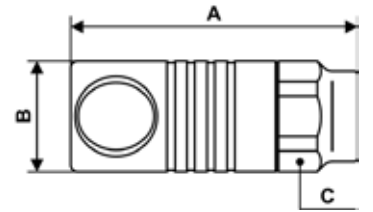


## METAL SAFETY QUICK COUPLINGS - CSM 08



Parallel female thread coupler

Profile : ISO 6150C



<b>Min / Max operating pressure</b> 2 / 16 bar	<b>Flow rate at 6 bar</b> 2120 l/min	<b>ID passage</b> 8 mm	<b>Min. / Max temperature</b> -15 / 70 °C
---	---	---------------------------	--

Part number	Female thread	Dim. A (mm)	Dim. B (mm)	Dim. C (mm)
CSM 081101	G1/4	68.5	27	25
CSM 081102	G3/8	69.5	27	25
CSM 081103	G1/2	74.5	27	25